

Coaxial Amplifier

ZVE-8G+

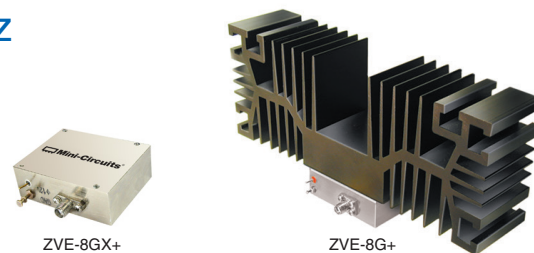
50Ω Medium High Power 2000 to 8000 MHz

Features

- wideband, 2 to 8 GHz
- low noise, 4 dB typ.
- high IP3, +40 dBm typ.
- high dynamic range
- high gain, 30 dB min
- laser sealed case

Applications

- satellite communications
- line-of-sight transmitters
- signal generators
- spread-spectrum communication



ZVE-8GX+

ZVE-8G+

CASE STYLE: BN333

Connectors	Model
SMA	ZVE-8G+
SMA	ZVE-8GX+

+RoHS Compliant

The +Suffix identifies RoHS Compliance. See our web site for RoHS Compliance methodologies and qualifications

Electrical Specifications

MODEL NO.	FREQUENCY (MHz)		GAIN (dB)		MAXIMUM POWER (dBm)		DYNAMIC RANGE		VSWR (:1) Max.		DC POWER	
	f_L	f_U	Min.	Flatness Max.	Output (1 dB Compr. Min.)	Input (no damage)	NF (dB) Typ.	IP3 (dBm) Typ.	In	Out	Volt (V) Nom.	Current (A) Max.
ZVE-8G+	2000	8000	30	±2.0	+30**	+20	4	+40	2.0	2.0	12	1.2
ZVE-8GX+*	2000	8000	30	±2.0	+30**	+20	4	+40	2.0	2.0	12	1.2

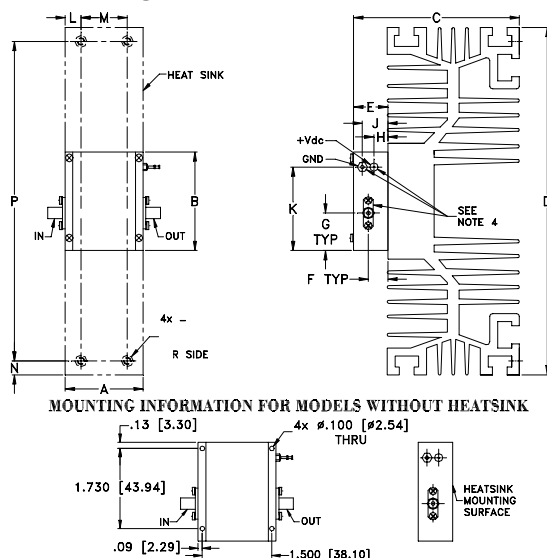
* Heat sink not included

** At 25°C; +30 dBm typ. at 54°C ambient.

Open load is not recommended, potentially can cause damage.
With no load derate max input power by 20 dB

To order without heat sink, add suffix X to model number. Alternative heat sinking and heat removal must be provided by the user to limit maximum base-plate temperature to 85°C, in order to ensure proper performance. For reference, this requires thermal resistance of user's external heat sink to be 1.3°C/W Max.

Outline Drawing



MOUNTING INFORMATION FOR MODELS WITHOUT HEATSINK

Maximum Ratings

Operating Temperature -55°C to 54°C

Storage Temperature -65°C to 150°C

DC Voltage +18V Max.

Permanent damage may occur if any of these limits are exceeded.

Outline Dimensions (inch mm)

A	B	C	D	E	F	G	H	J	K	L	M	N	P	wt
1.680	2.130	3.6	7.5	.74	.42	.81	.30	.55	1.80	.34	1.000	.30	6.900	grams*
42.67	54.10	91.44	190.50	18.80	10.67	20.57	7.62	13.97	45.72	8.64	25.40	7.62	175.26	700

*100 grams without heatsink

Notes

- Performance and quality attributes and conditions not expressly stated in this specification document are intended to be excluded and do not form a part of this specification document.
- Electrical specifications and performance data contained in this specification document are based on Mini-Circuit's applicable established test performance criteria and measurement instructions.
- The parts covered by this specification document are subject to Mini-Circuits standard limited warranty and terms and conditions (collectively, "Standard Terms"); Purchasers of this part are entitled to the rights and benefits contained therein. For a full statement of the Standard Terms and the exclusive rights and remedies thereunder, please visit Mini-Circuits' website at www.minicircuits.com/MCLStore/terms.jsp



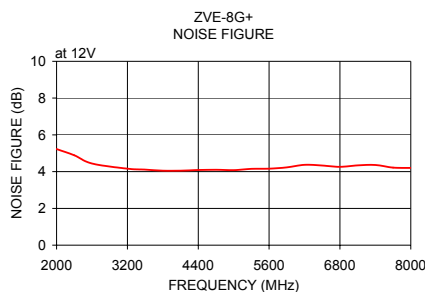
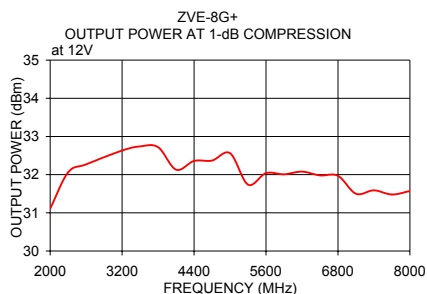
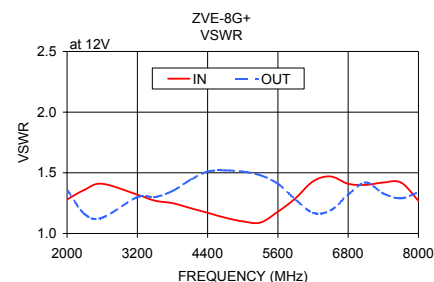
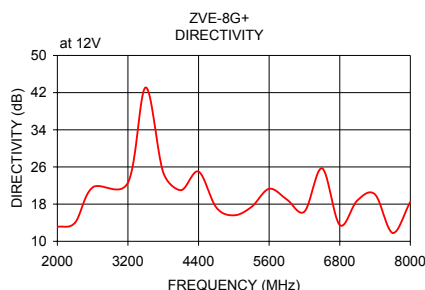
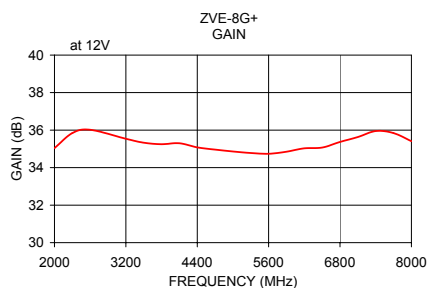
www.minicircuits.com P.O. Box 350166, Brooklyn, NY 11235-0003 (718) 934-4500 sales@minicircuits.com

REV. F
M151107
ZVE-8G+
151005
Page 1 of 2

Typical Performance Data/Curves

ZVE-8G+

FREQUENCY (MHz)	GAIN (dB)	DIRECTIVITY (dB)	VSWR (:1)		NOISE FIGURE (dB)	POUT at 1 dB COMPR. (dBm)
	12V	12V	IN	OUT	12V	12V
2000.00	35.04	13.10	1.28	1.36	5.23	31.11
2300.00	35.84	14.00	1.36	1.16	4.89	32.06
2600.00	36.02	21.60	1.41	1.13	4.44	32.27
3200.00	35.54	22.60	1.32	1.30	4.16	32.63
3500.00	35.33	43.10	1.27	1.30	4.11	32.74
3800.00	35.25	24.80	1.25	1.35	4.05	32.72
4100.00	35.30	21.00	1.21	1.44	4.05	32.13
4400.00	35.08	25.00	1.17	1.51	4.09	32.36
4700.00	34.96	17.30	1.13	1.52	4.10	32.37
5000.00	34.86	15.60	1.10	1.51	4.08	32.56
5300.00	34.78	17.40	1.09	1.48	4.15	31.74
5600.00	34.74	21.30	1.18	1.41	4.16	32.04
5900.00	34.85	19.00	1.29	1.28	4.23	32.01
6200.00	35.03	16.40	1.43	1.17	4.37	32.08
6500.00	35.07	25.70	1.47	1.19	4.33	31.98
6800.00	35.37	13.50	1.41	1.32	4.26	31.97
7100.00	35.63	18.80	1.40	1.42	4.34	31.50
7400.00	35.95	20.10	1.42	1.33	4.36	31.59
7700.00	35.84	11.80	1.42	1.29	4.22	31.48
8000.00	35.41	18.50	1.27	1.34	4.20	31.57



Notes

- Performance and quality attributes and conditions not expressly stated in this specification document are intended to be excluded and do not form a part of this specification document.
- Electrical specifications and performance data contained in this specification document are based on Mini-Circuit's applicable established test performance criteria and measurement instructions.
- The parts covered by this specification document are subject to Mini-Circuits standard limited warranty and terms and conditions (collectively, "Standard Terms"); Purchasers of this part are entitled to the rights and benefits contained therein. For a full statement of the Standard Terms and the exclusive rights and remedies thereunder, please visit Mini-Circuits' website at www.minicircuits.com/MCLStore/terms.jsp

